

Kenton C. Ward, CFM
Surveyor of Hamilton County
Phone (317) 776-8495
Fax (317) 776-9628

Suite 188
One Hamilton County Square
Noblesville, Indiana 46060-2230

Map Correction-Field Verification

Drain Number: 361

Drain Length: 7085

Drain Name: Raymond Briles

Change + / - : -101

Date: 08-29-2014

New Length: 6984

Verified By: SLM & SAB (WO-2014-00299)

Notes & Sketch: See attached maps.

This work order was investigative as well as making needed repairs. The drain has now been mapped to reflect what was determined out in the field. The only exception to this is Sta. 0 to Sta. 10+00. This area was mapped via the legal description and more importantly the 2011 topographic information. This is method was also used for Sta. 0 to Sta. 12+76 of Arm 1.

Major changes that occurred with this work order as follows: Sta. 16+54 to Sta. 20+60 was 8" tile. This tile had been cut in many places and had been function as a swale/open ditch. This area was graded for positive flow to the pond. Therefore the map will reflect open ditch rather than tile. This grading added 39 feet of additional drain in this area.

The second change of note is in the footage of the drain along with the notation of various changes in pipe materials in various parts of the drain. The change in footage is due to the locating of the drain in various areas, setting breathers, and using GPS. This clarification removed approximately 140 feet from the drain's length. The changes in pipe materials and sizes were due to various work orders over the years since maintenance began. These changes have been noted in the GIS and cross-referenced.

Suzanne L. Mills
GIS Specialist

**Gasb 34 Asset Price &
Drain Length Log**

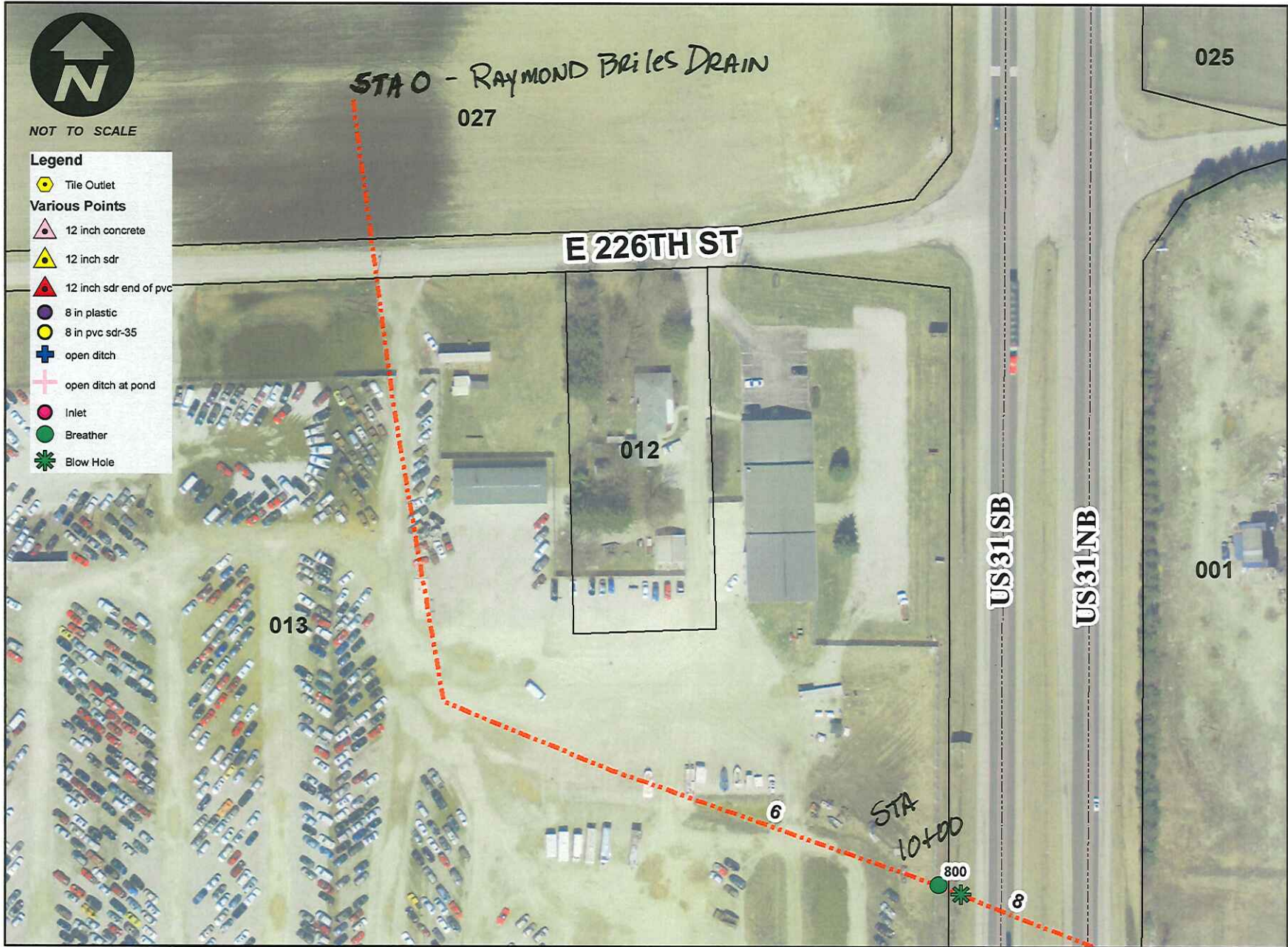
Drain-Improvement: RAYMOND BRILES

Drain Type:	Size:	Length	Length (DB Query)	Length Reconcile	If Applicable	
					Price:	Cost:
TILE	6"	1900	1900	∅	\$1 ⁰⁰	\$1900 ⁰⁰
	8"	612	612	∅	\$2 ⁰⁰	\$1224 ⁰⁰
	10"	1665'	1665'	∅	\$3 ⁰⁰	\$4995 ⁰⁰
	12"	1013'	1013'	∅	\$4 ⁰⁰	\$4052 ⁰⁰
	15"	345	345'	∅	\$5 ⁰⁰	\$1725 ⁰⁰
CMP	18"	20	20	∅	\$25 ⁰⁰	\$500 ⁰⁰
CONCRETE	12"	45'	45'	∅	\$4 ⁰⁰	\$180 ⁰⁰
SDR 35	12"	255	255	∅	\$3 ⁰⁵	\$777 ⁷⁵
PVC	8"	40	40'	∅	\$3 ⁰⁰	\$120 ⁰⁰
Plastic	8"	51	51'	∅	\$1.50	\$76 ⁵⁰
SDR-35	8"	97	97'	∅	\$2.18	\$211 ⁴⁶
RCP	12"	96	96	∅	\$7.25	\$696 ⁰⁰
open		845'	845'	∅	\$1955	\$16,519 ⁷⁵
Sum:		<u>6984</u>	<u>6984</u>	<u>∅</u>		<u>\$32,977.46</u>

Final Report: Map Correction

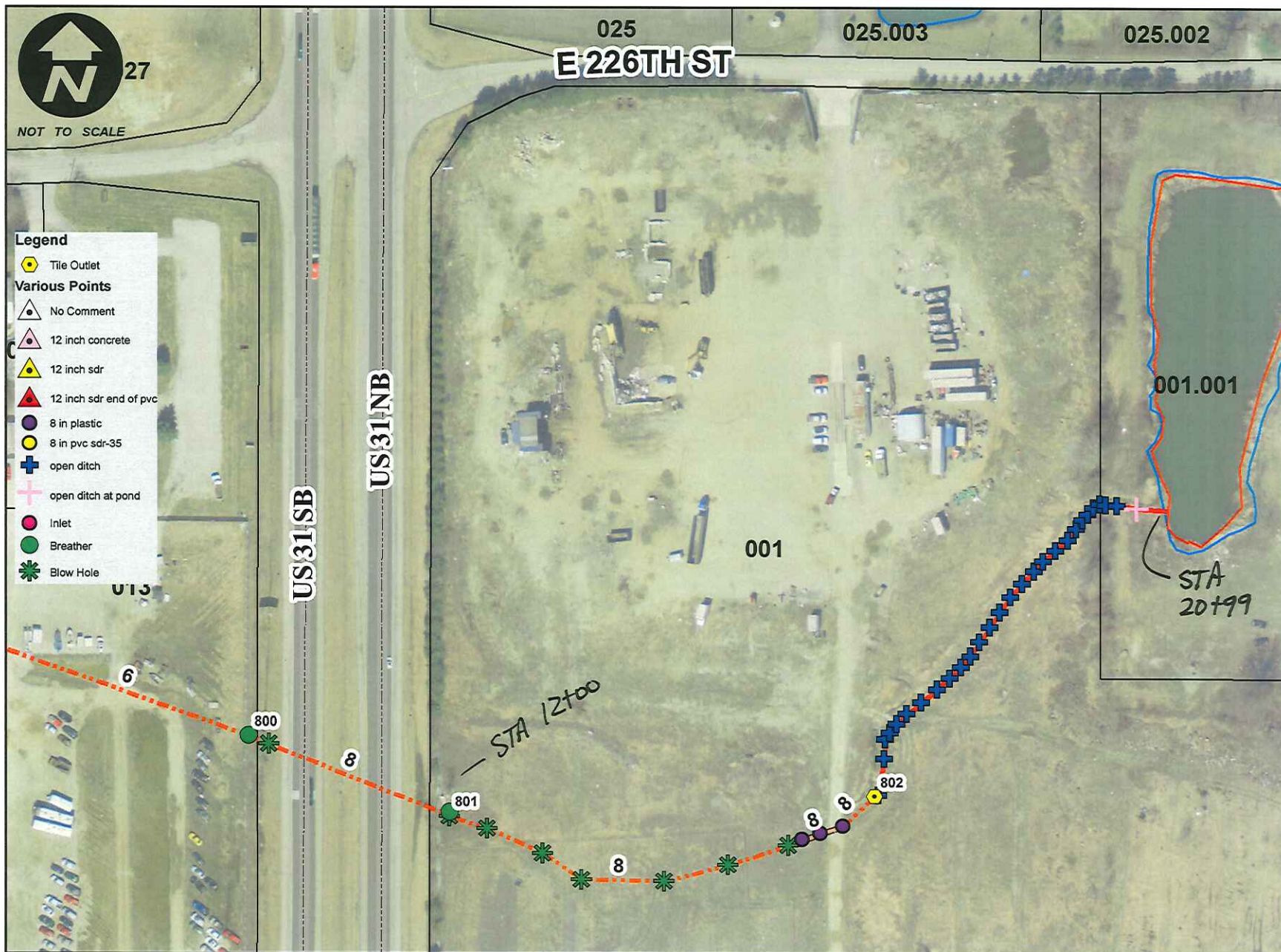
Comments:

WD-2014-00299



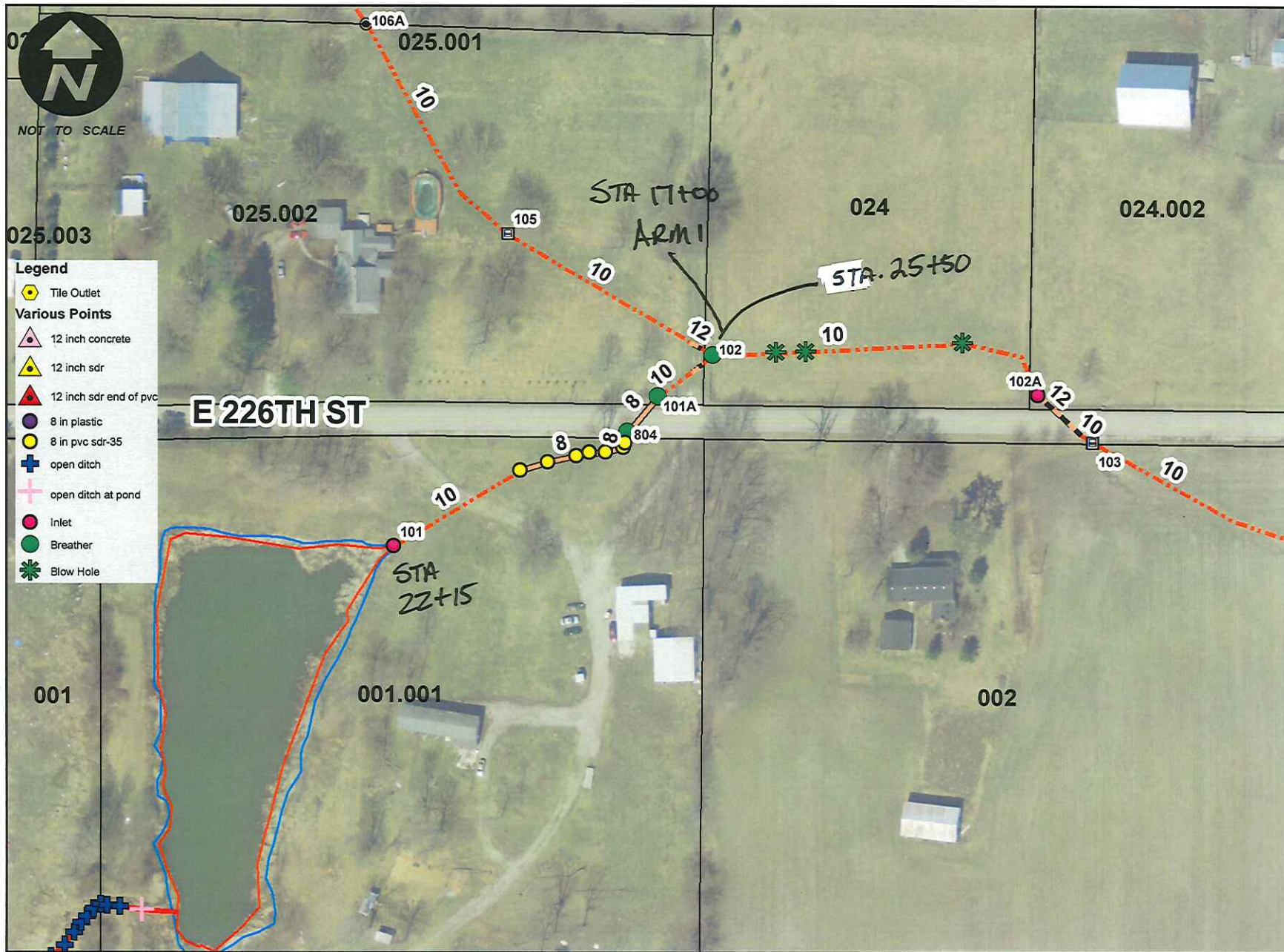
Date: 8/28/2014

Map by: slm



Date: 8/28/2014

Map by: slm



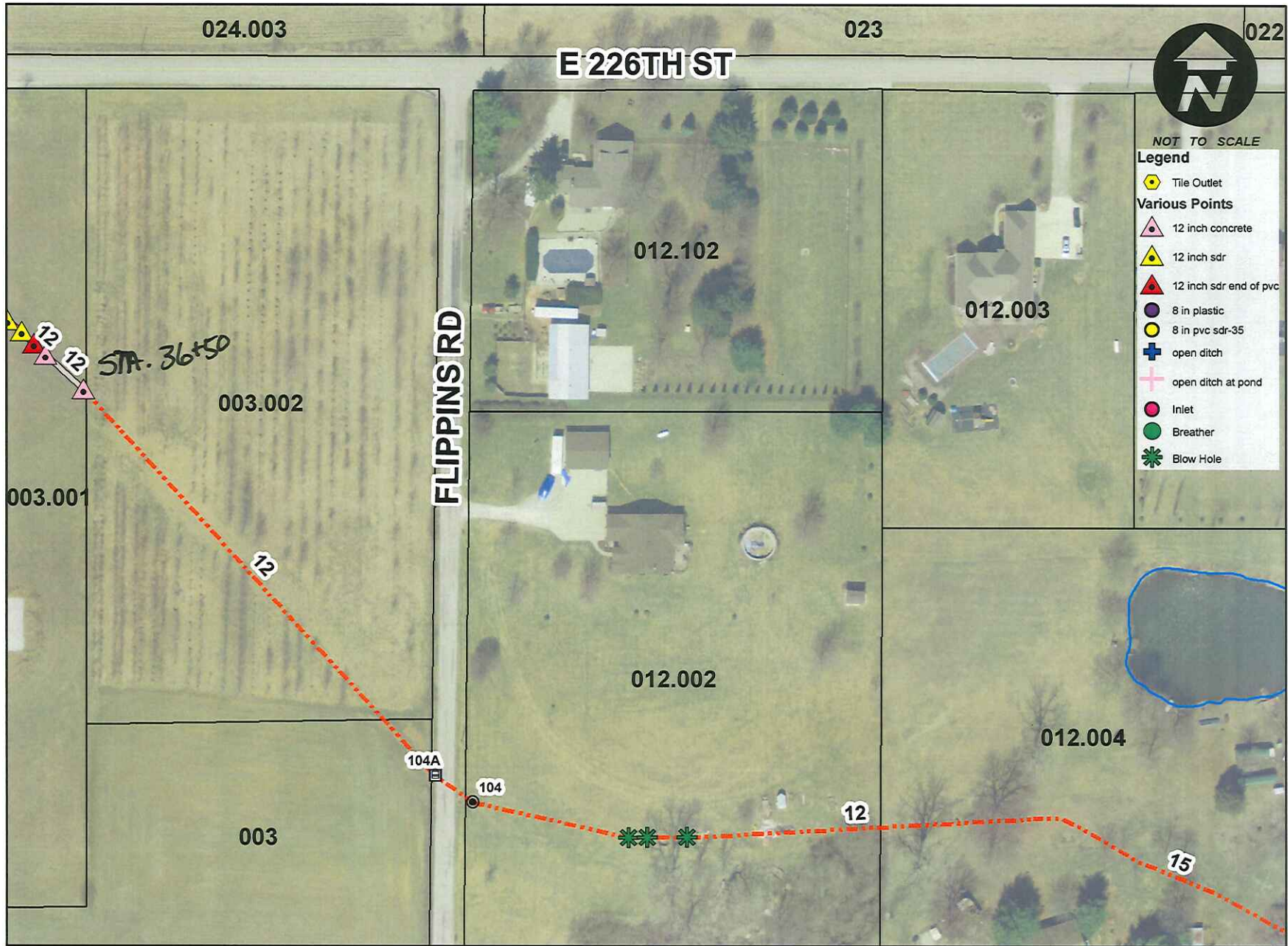
Date: 8/28/2014

Map by: slm



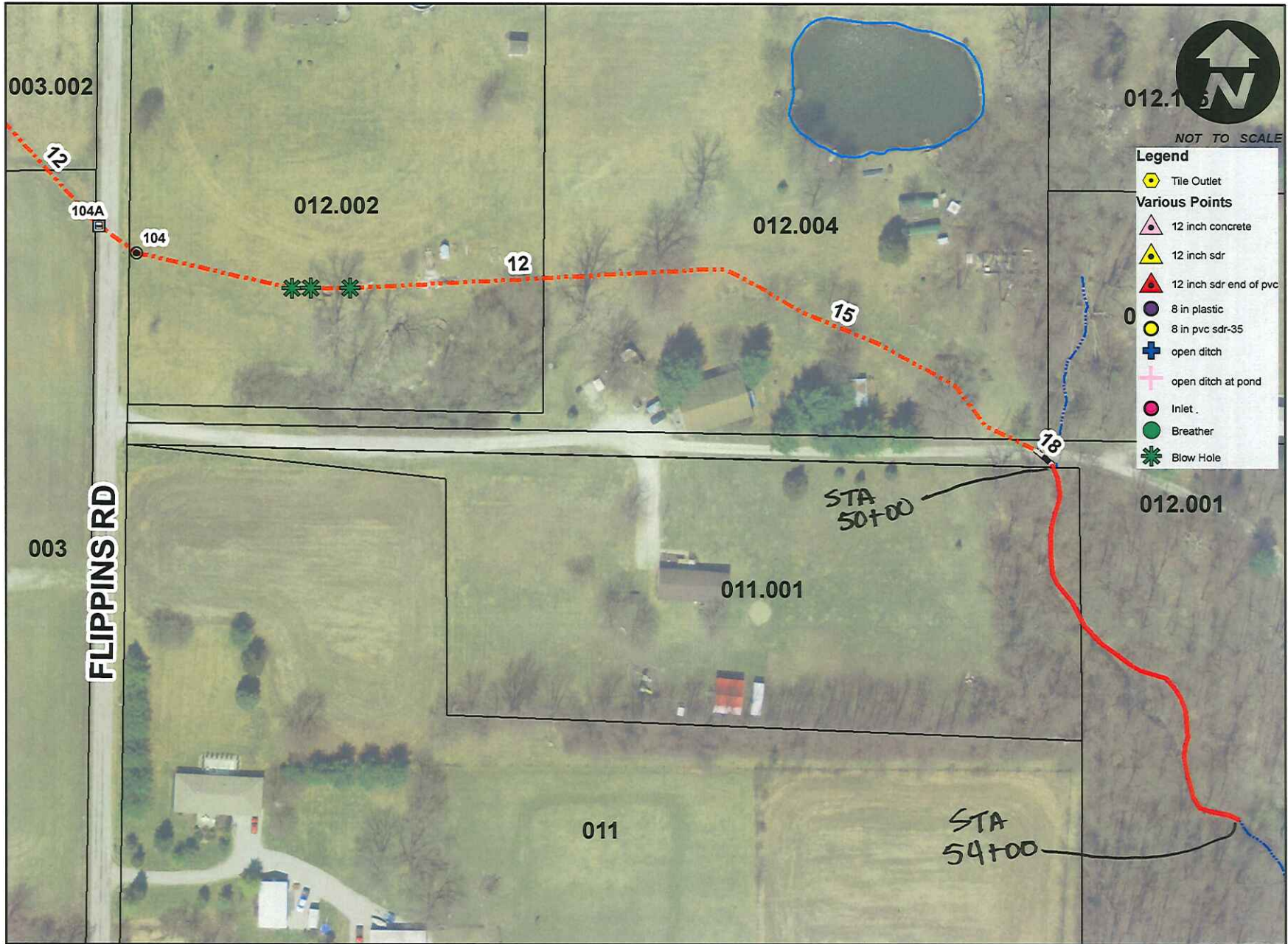
Date: 8/28/2014

Map by: slm



Date: 8/28/2014

Map by: slm



Date: 8/28/2014

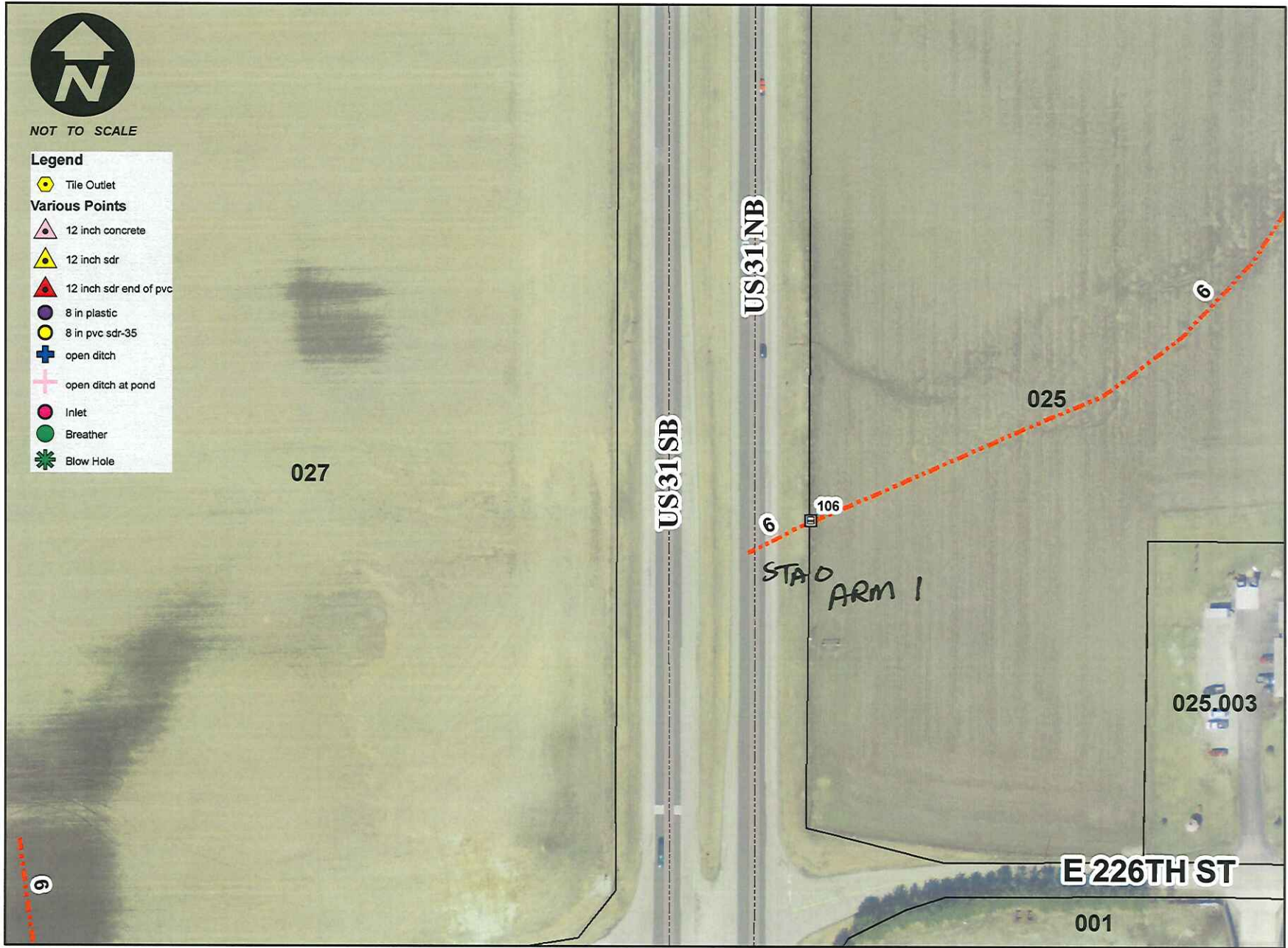
Map by: slm



NOT TO SCALE

Legend

-  Tile Outlet
- Various Points**
-  12 inch concrete
-  12 inch sdr
-  12 inch sdr end of pvc
-  8 in plastic
-  8 in pvc sdr-35
-  open ditch
-  open ditch at pond
-  Inlet
-  Breather
-  Blow Hole



Date: 8/28/2014
Map by: slm



Date: 8/28/2014

Map by: slm